



Estamos viviendo tiempos difíciles. Muchos cambios, dudas e incertidumbre. Estamos conscientes que será difícil estar conectados, pero estamos juntos en esto y nos ayudaremos unos a otros.

This is a difficult time for **everyone**.

**Lots of changes and unknowns.**

It can be hard to **connect** when we have to be apart.

We are all in this **together** and **we will help** each other.

Like these Facebook pages



Rock County Public Health Department

<https://www.facebook.com/rockcountyPHD/>

Wisconsin Department of Health Services

<https://www.facebook.com/DHSWI/>

Center for Disease Control and Prevention

<https://www.facebook.com/CDC>

## Food Pantries

### Caritas

The lobby is closed but you can drive up and knock. Normal operating hours: M-W 10 a.m.-2:15 p.m. Th 10 a.m.-12:15 p.m., Sat 10 a.m.-11:45p.m.

They are asking that no one come prior to 11 so that they can have pre-packaged boxes of food ready to go.

### Edgerton Food Pantry

(For Edgerton residents only)  
10 a.m.- 2 p.m. on M, T, TH, F, 1-5:30 p.m. W  
Food orders must be called in and picked up in back of the building.

### Echo Janesville

No outside individuals in the building. Call ahead for all services. 608-754-5333

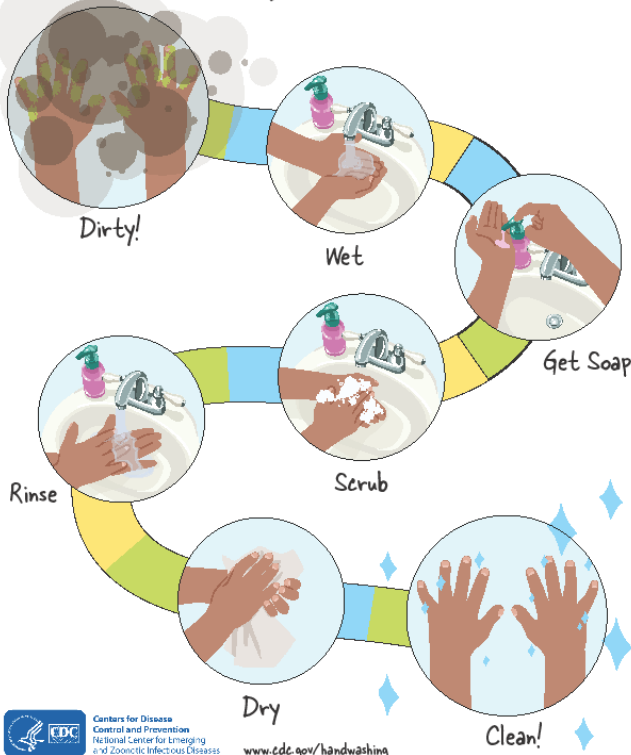
### Janesville Salvation Army

Food Pantry is open M-F 1-4 p.m. The door is locked and you will need to knock. The daily hot meal is now a bag lunch that must be taken with, pick up is 11-1.

### JANESVILLE MEAL DELIVERY

You can order groceries. Let them know what you need and when. Payments accepted by cash check or online. Call or text 608-352-8622  
<https://janessvillemealdelivery.weebly.com/>

## Wash Your Hands!



## FREE INTERNET!

Charter will offer free Spectrum broadband at any service level up to 100 Mbps and Wi-Fi access for 60 days to households with K-12 and/or college students who do not already have a Spectrum broadband subscription. A free self-installation kit will be provided to new student households. To enroll, call 1-844-488-8395.

Charter will open its Wi-Fi hotspots for public use. A map with all of Charter's Wi-Fi hot spots is available here: [www.Spectrum.com/WiFi-Hotspots](http://www.Spectrum.com/WiFi-Hotspots)

For additional resources visit this site:

<https://psc.wi.gov/Pages/Programs/BroadbandEmergencyInternetResources.aspx>

The Job Center building is closed, but **ECONOMIC SUPPORT SERVICES** and the Southern Consortium Call Center continue to operate for eligibility determination and ongoing access to benefits including **Foodshare, Medicaid, Unemployment and Child Care assistance.** The Southern Consortium call center can be reached by calling: 1-888-794-5780 or online at <https://access.wisconsin.gov/access/>

Para información sobre los recursos que tenemos para ustedes en Rock County, marca para hablar con uno de nuestros representantes quien te atenderá de manera atenta, cordial y profesional en tu área. Todas las llamadas son confidenciales.



## CALL 211

For information about resources in Rock County  
<https://211wisconsin.communityos.org/>



## TRANSPORTATION

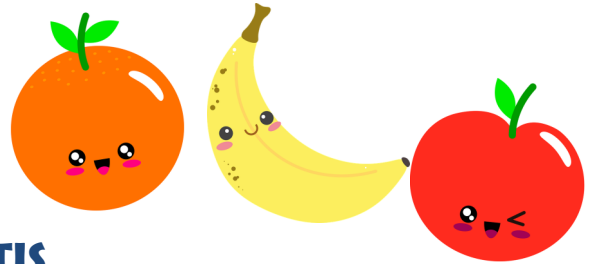
**Beloit Transit** is operating by appointment only. Call 608-364-2870 to schedule ESSENTIAL rides.

**Janesville Transit** is operating as usual.

**MTM** is continuing to provide transportation as usual, but encouraging customers to use their own car and gas vouchers if possible.



\*Please note that changes may happen quickly. Call or visit websites for the most up to date information.



## FREE MEALS

\*for children 18 and younger

## COMIDAS GRATIS

\*los niños de hasta 18 años de edad

**Beloit School District-** <https://www.sdb.k12.wi.us/>

Mon-Fri, 11am-1pm

All elementary schools and Beloit Memorial High School

**Milton-** <https://www.milton.k12.wi.us/>

Requests Pick Up Form be completed online, but not necessary  
 Starting 03/30/20

Harmony Elementary 10:30-11:00 (Front Parking Lot)

East Elementary 11:15-11:45 (By Main Entrance Lot)

West Elementary 12:00-12:30 (By Main Entrance Lot)

MHS 12:45-1:15 (By Auditorium Doors)

**Edgerton-** <https://www.edgerton.k12.wi.us/>

Sign up: <http://bit.ly/ESDFoodToGo>

Meals will be delivered to your home on Tuesdays and Fridays, with multiple meals being dropped off at a time.

**Evansville-** <https://www.ecsdnet.org/>

Monday thru Friday, 11:30 am – 12:30 pm

Theodore Robinson Intermediate School at the 4th Street drop off/pick up area and Countryside Park on Water Street

**Clinton-** <https://www.clinton.k12.wi.us/>

Clinton High School 10:30 AM – 11:00 AM, front drop off circle to pick up

Shady Hill Mobile Home Park 10:30 AM – 11:00 AM, food service van will drive through the park

Douglas Construction (across the street from the Avalon post office) 11:15 AM – 11:30 AM, food service van will be parked in the front of the Douglas Construction Building

Turtle Town Hall 11:45 AM – 12:00 AM, food service van will be in the parking lot

**Parkview-** <https://www.parkview.k12.wi.us/>

Call 608-879-2994. Ext. 6123 to Order

Monday, Wednesday & Friday, 11:00 AM - 12:30 PM

Pick up location: Parkview Jr. Sr. High School

**Janesville-** <https://www.janesville.k12.wi.us/>

Monday thru Friday, 11:00 am – 1:00 p,

Craig High School, Eastside of school, lower cafeteria level

Parker High School, West side parking lot

Marshall Middle School, Main entrance

Edison Middle School, Main entrance

Jefferson Elementary School, Main entrance

Madison Elementary School, Main entrance

Van Buren Elementary School, Door #2 Circle Drive

Wilson Elementary School, Main entrance

-or for delivery-

TEXT 608-921-1874 with:

- Your name, home address, and telephone number; and
- Number of meals for children 18 and younger in the household.

Text messages must be sent the day before for meal delivery the next day (i.e., send text on Monday for Tuesday delivery). Deliveries begin at 10:00 AM daily (weekdays) and will continue until completed.