



Converse

Based on the facilities assessment report conducted in the fall of 2023, the district must focus its resources and attention on the MEP upgrades/needs throughout our buildings. Both Converse and Robinson rated within category 2 for plumbing, i.e., “Functional, and in poor condition, worn from use.”



Robinson

Interior conditions (finishes, ceilings, flooring etc.) also scored within category 2 at Cunningham and Todd



Cunningham



Todd



Merrill

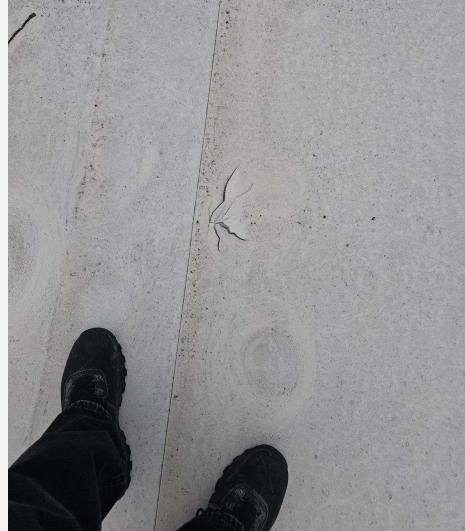


Hackett

In addition to the MEP upgrades throughout our elementary schools, Hackett and Merrill playground sites are in need of green space. In fact, Hackett is the only elementary school in Beloit with no green space available for our students. In addition, the current state of the asphalt and concrete at both locations, i.e., alligator cracking, and inadequate drainage presents significant safety hazards for the students, as well as increasing costs for preventative maintenance year after year.

In November of 2024, an influx of rain throughout the region resulted with leaks in 3 different classroom. These types of unforeseen occurrences will continue to transpire throughout the district as our structural and MEP systems continue to age.

Converse



Gaston

